



PARTS LIST FOR NO. 2 1/2 SERIES MULTI-ASSEMBLY TOOLS AIR SCREWDRIVERS, NUTRUNNERS, AND DRILLS SERIAL "A"

Form A841A
Date 10-00/C
Page 1 of 12

PISTOL HANDLE

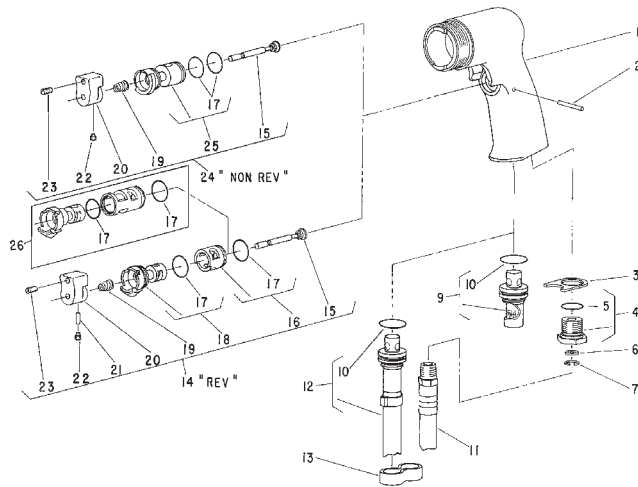


Fig. No.	Part No.	Description
1.	12660	Housing
2.	40157	Pin—Dowel (1/8" x 1-1/8")
3.	54968	Retainer—Exhaust
4.	54955	Adapter—Inlet
5.	14281	Ring—"O"
6.	30463	Screen
7.	21541	Ring—Retaining
9.	63545	Ass'y—Silencer
10.	14366	Ring—"O"
11.	1376	Ass'y—Leader Hose
12.	63546	Ass'y—Exhaust Tube Remote
13.	40153	Clip—Hose (3)*
14.	65217	Ass'y—Trigger (Reversing)
15.	54222	Valve
§ 16.		Sleeve—Valve
17.	14378	Ring—"O" (2)*
§ 18.		Body—Valve (Reversing)
19.	21401	Spring
20.	12676	Trigger
21.	40155	Pin—Dowel (1/8" x 3/8")
22.	06458	Screw—Set (#8-32 x 3/16")
23.	06459	Screw—Set (#8-32 x 1/2")
24.	63359	Ass'y—Trigger (Non-Reversing)
25.	11600	Body—Valve (Non-Reversing)
26.	65227	Body—Valve & Sleeve (Reversing)

Remote Exhaust

COMPLETE ASSEMBLY—Pistol Handle

63360	Ass'y—Housing (Reversing)(Includes Figs. 1-9, 14)
63361	Ass'y—Housing (Non-Reversing)(Includes Figs. 1-9, 24)

§Not Available—Order Part Number 65227 (Fig. 26)

LEVER HANDLE

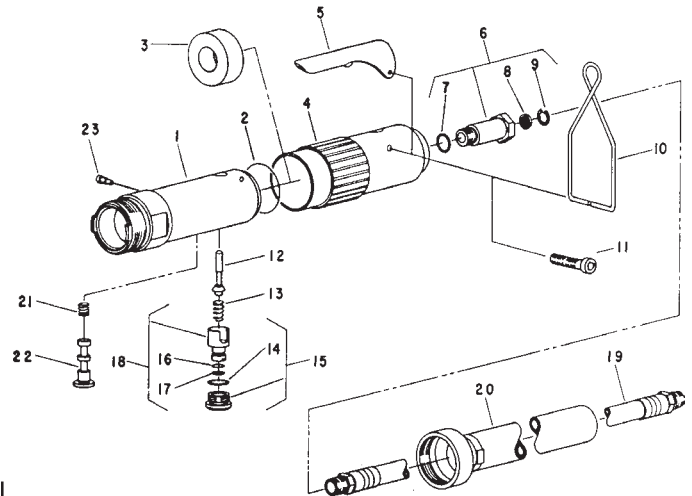


Fig. No.	Part No.	Description
1.	64035	Housing (Reversing)
	64036	Housing (Non-Reversing)
2.	14333	Ring—"O"
3.	40116	Material—Exhaust
4.	04041	Cover—Housing (Reversing)
	04042	Cover—Housing (Non-Reversing)
5.	35737	Lever
6.	54837	Adapter—Intake
7.	14312	Ring—"O"
8.	30463	Screen
9.	21541	Ring—Retaining
10.	41334	Bail
11.	65499	Screw—Pan Hd. (Self Tap)(#6-32 x 3/4)(2)*
12.	63241	Ass'y—Valve
13.	21427	Spring
14.	14309	Ring—"O"
15.	54844	Retainer—Speed Control
16.	14290	Ring—"O"
17.	14291	Ring—"O"
18.	54843	Speed—Control
19.	1376	Hose—Leader
20.	63355	Ass'y—Hose Exhaust
21.	21427	Spring (Reversing Only)
22.	64038	Spool—Valve (Reversing Only)
	64097	Spool—Valve Locking
23.	06254	Screw—Spool Retaining (Reversing Only)

Remote Exhaust

COMPLETE ASSEMBLY—Lever Handle

63443	Ass'y—Housing (Reversing)(Includes Figs. 1-18 & 21-23)
63444	Ass'y—Housing (Non-Reversing)(Includes Figs. 1-18)

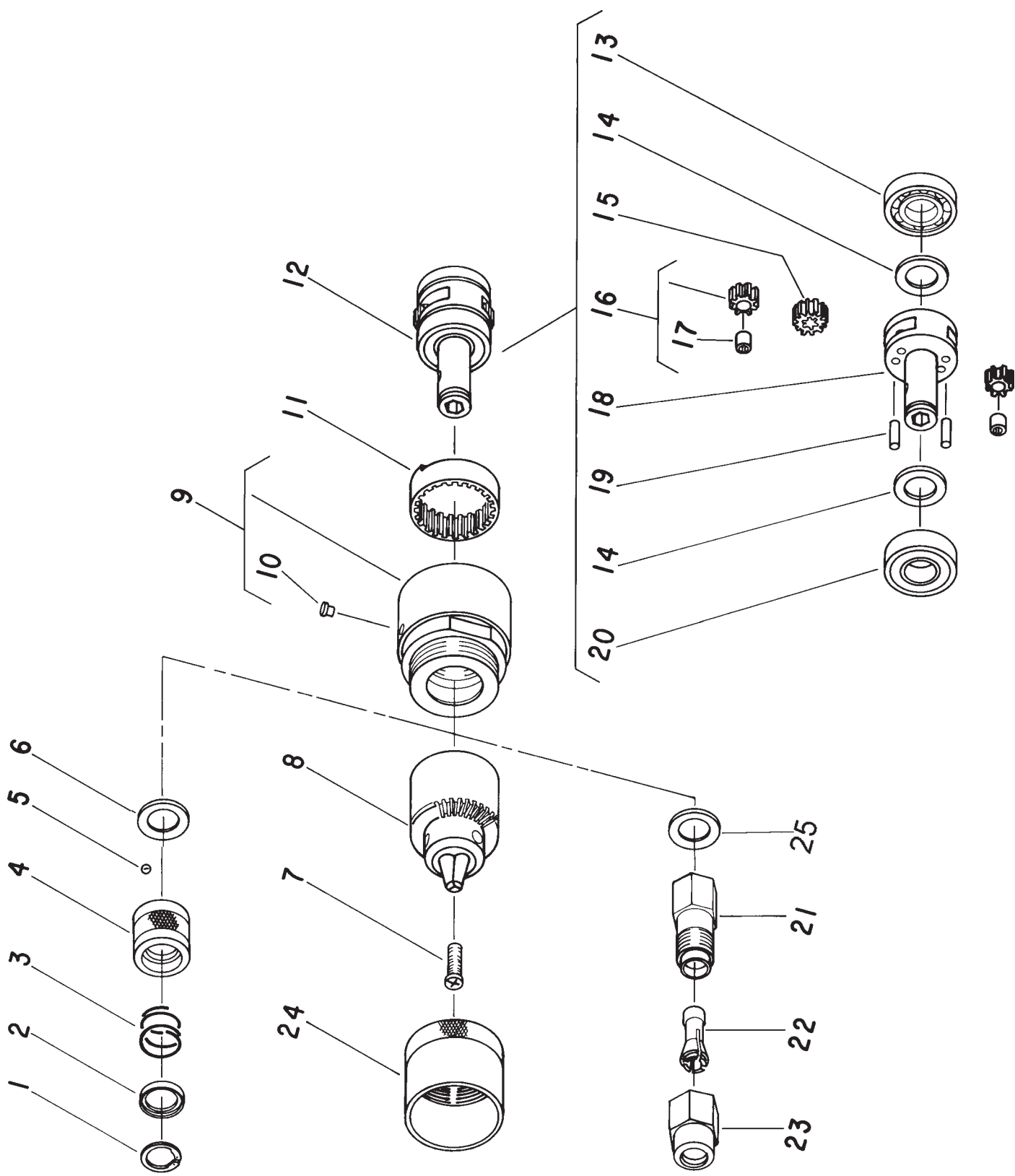
*Order Quantity As Required

FURNISH CATALOG, SERIAL, AND MODEL NUMBER WHEN ORDERING PARTS

SIoux TOOLS INC.

250 SNAP-ON DRIVE ■ PO BOX 1596 ■ MURPHY, NORTH CAROLINA 28906 ■ USA ■

Printed In U.S.A.



PARTS LIST FOR

NO. 2 1/2 SERIES SINGLE REDUCTION GEAR CASE

2000, 2600, 2500, 3350, 4400, 5800 RPM UNITS

Fig. No.	Part No.	Description	
1.	21501	Ring—Retaining	Stall Drive
2.	44660	Ring—Guide	
3.	21406	Spring—Stall Drive	
4.	44161	Retainer—Ball	
5.	10902	Ball—Steel	
6.	25439	Washer	
7.	57250	Screw (M5 x .8 x 20 L.H.)(1/4 Cap. Chucks)	
	57250R	Screw (M5 x .8 x 20 L.H.)(3/8 Cap. Chucks)	
8.	21077	Chuck (0-1/4" Cap.)	
	21133	Chuck (1/16"-3/8" Cap.)	
	30000	Key—Chuck (For 1/4" Chucks)	
	30002	Key—Chuck (For 3/8" Chucks)	
9.	54974	Case—Gear (Stall Drive and Drill) (Without Threads)	
	64004	Case—Gear (Screwdriver, Nutrunner, Clinch Nut)(With Threads)	
	64007	Case—Gear (Stall Bar)	
10.	30375	Fitting—Grease	
11.	19265	Gear—Ring	
12.	63387	Ass'y—Planetary Reduction (2000, 2600 RPM)	Screwdriver & Nutrunner
	63378	Ass'y—Planetary Reduction (2500, 3350 RPM)	
	63382	Ass'y—Planetary Reduction (4400, 5800 RPM)	
	63388	Ass'y—Planetary Reduction (2000, 2600 RPM)	Drills 3/8-24 Thd
	63379	Ass'y—Planetary Reduction (2500, 3350 RPM)	
	63383	Ass'y—Planetary Reduction (4400, 5800 RPM)	
	43744	Ass'y—Planetary Reduction (2000, 2600 RPM)	Stall Drive (Includes Figs. 1-6)
	63380	Ass'y—Planetary Reduction (2500, 3350 RPM)	
	63384	Ass'y—Planetary Reduction (4400, 5800 RPM)	
	63136	Ass'y—Planetary Reduction (2000, 2600 RPM)	Clinch Nut
	63381	Ass'y—Planetary Reduction (2500, 3350 RPM)	
	63519	Ass'y—Planetary Reduction (2600 RPM)	Stall Bar
	63517	Ass'y—Planetary Reduction (3350 RPM)	
	63518	Ass'y—Planetary Reduction (5800 RPM)	
13.	10203	Bearing—Ball	
14.	25439	Washer(2)*	
15.	19267	Gear—Pinion (4400, 5800 RPM)	
16.	19317	Ass'y—Gear and Bearing (2)* (2000, 2600 RPM)	
	19314	Ass'y—Gear and Bearing (2)* (2500, 3350 RPM)	
	19331	Ass'y—Gear and Bearing (2)* (4400, 5800 RPM)	

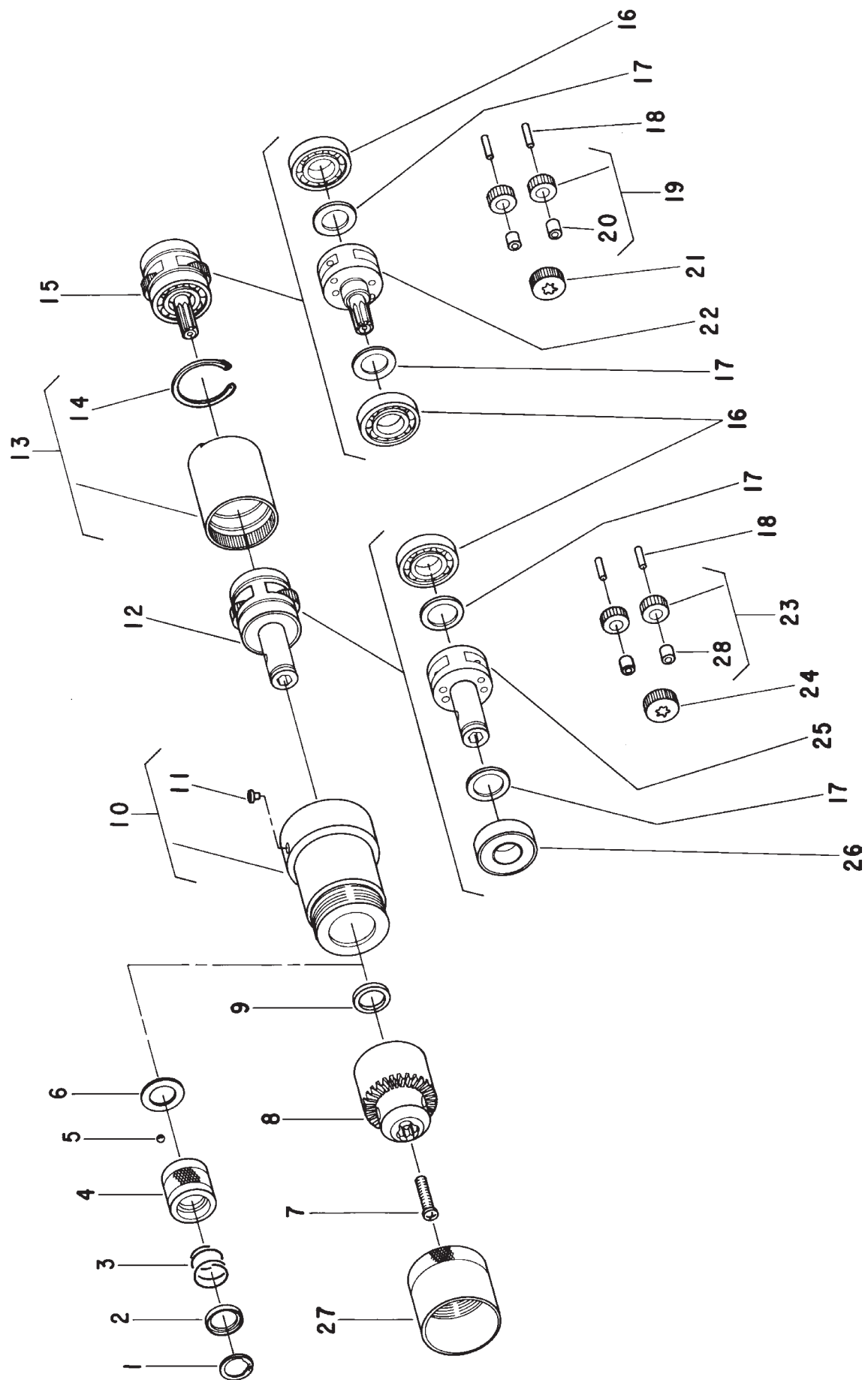
Fig. No.	Part No.	Description	
17.	10040	Bearing—Needle(2)*	
18.	22700	Carrier—Gear (2000, 2600 RPM)	Screwdriver & Nutrunner
	64162	Carrier—Gear (2500, 3350 RPM)	
	64161	Carrier—Gear (4400, 5800 RPM)	Drills 3/8-24 Thd
	22699	Carrier—Gear (2000, 2600 RPM)	
	64163	Carrier—Gear (2500, 3350 RPM)	
	64164	Carrier—Gear (4400, 5800 RPM)	Stall Drive & Clinch Nut
	22664	Carrier—Gear (2000, 2600 RPM)	
	64157	Carrier—Gear (2500, 3350 RPM)	
	64158	Carrier—Gear (4400, 5800 RPM)	Stall Bar
	22707	Carrier—Gear (2600 RPM)	
	64153	Carrier—Gear (3350 RPM)	
	64154	Carrier—Gear (5800 RPM)	
19.	30062	Pin(2)*	
20.	10228	Bearing—Ball	
21.	21096	Body—Collet	
22.	44440	Collet—1/4"	
	44523	Collet—3/16"	
	44522	Collet—1/8"	
23.	21097	Nut—Collet	
	30465	Wrench—9/16"	
	30466	Wrench—11/16"	
24.	34952	Shield—Chuck (1/4" Cap.)	Requires Gear Case with Threads
	34951	Shield—Chuck (3/8" Cap.)	
25.	44122	Spacer (Collets Only)	
	2355	Ass'y—Dead Handle (Not Shown)	

COMPLETE ASSEMBLY

63462	Ass'y—Gear Case Complete (2000, 2600 RPM)	Screwdriver & Nutrunner (Includes Figs. 9-12)
63463	Ass'y—Gear Case Complete (2500, 3350 RPM)	
63467	Ass'y—Gear Case Complete (2000, 2600 RPM)	Drills 3/8-24 Thd (Includes Figs. 9-12)
63468	Ass'y—Gear Case Complete (2500, 3350 RPM)	
63469	Ass'y—Gear Case Complete (4400, 5800 RPM)	
63473	Ass'y—Gear Case Complete (2000, 2600 RPM)	Stall Drive (Includes Figs. 1-6, 9-12)
63474	Ass'y—Gear Case Complete (2500, 3350 RPM)	
63475	Ass'y—Gear Case Complete (4400, 5800 RPM)	
63479	Ass'y—Gear Case Complete (2000 RPM)	Clinch Nut (Includes Figs. 9-12)
63480	Ass'y—Gear Case Complete (2500 RPM)	

*Order Quantity As Required

**FURNISH CATALOG, SERIAL, AND MODEL NUMBER WHEN
ORDERING PARTS**



PARTS LIST FOR

NO. 2 1/2 SERIES DOUBLE REDUCTION GEAR CASE

400, 540, 700, 900, 1200, 1600 RPM UNITS

Fig. No.	Part No.	Description	
1.	21501	Ring—Retainer	Stall Drive
2.	44660	Ring—Guide	
3.	21406	Spring	
4.	44161	Retainer—Ball	
5.	10902	Ball—Steel	
6.	25439	Washer	
7.	57250	Screw (M5 x .8 x 20 L.H.)(1/4" Cap)	
	57250R	Screw (M5 x .8 x 20 L.H.)(3/8", 1/2" Cap)	
8.	21077	Chuck (0-1/4" Cap)	400, 540, 700, 900 RPM Only
	21133	Chuck (1/16"-3/8" Cap.)	
	21131	Chuck (1/16"-3/8" Cap.) (1/2"-20 Thread)	
	21137	Chuck (5/64"-1/2" Cap.) (1/2"-20 Thread)	
9.	35798	Washer (400, 540, 700, 900 RPM Drill)	
10.	64003	Case—Gear (Stall Drive, Drill)(Without Threads)	
	64002	Case—Gear (Screwdriver, Nutrunner, Clinch Nut)(With Threads)	
	64006	Case—Gear (Stall Bar)	
11.	30375	Fitting—Grease	
12.	63378	Ass'y—Planetary Reduction (400, 540, 700, 900 RPM)	Screwdriver & Nutrunner
	63382B	Ass'y—Planetary Reduction (1200, 1600 RPM)	
	63436	Ass'y—Planetary Reduction (1/2"-20 Thd) (400, 540, 700, 900 RPM)	Drills
	63383B	Ass'y—Planetary Reduction (3/8"-24 Thd)(1200, 1600 RPM)	
	63379	Ass'y—Planetary Reduction (3/8"-24 Thd) (400, 540, 700, 900 RPM)	
	63383B	Ass'y—Planetary Reduction (1200, 1600 RPM)	Stall Drive (Includes Figs. 1-6)
	63380	Ass'y—Planetary Reduction (400, 540, 700, 900 RPM)	
	63384B	Ass'y—Planetary Reduction (1200, 1600 RPM)	Clinch Nut
	63381	Ass'y—Planetary Reduction (400, 540, 700, 900 RPM)	
	63385B	Ass'y—Planetary Reduction (1200, 1600 RPM)	Stall Bar
	63517	Ass'y—Planetary Reduction (540, 900 RPM)	
	63518B	Ass'y—Planetary Reduction (1600 RPM)	
13.	19266	Gear—Ring	
14.	21510	Ring—Retainer	
15.	63386	Ass'y—Planetary Reduction (400, 540 RPM)	
	63377	Ass'y—Planetary Reduction (700, 900 RPM)	
	63392	Ass'y—Planetary Reduction (1200, 1600 RPM)	
16.	10203	Bearing—Ball (3)*	
17.	25439	Washer(4)*	
18.	30062	Pin (4)*	
19.	19314	Ass'y—Gear & Bearing (2)*(400, 540 RPM)	
	19331	Ass'y—Gear & Bearing (2)*(700, 900, 1200, 1600 RPM)	
20.	10040	Bearing—Needle (2)*	
21.	19267	Gear—Pinion (700, 900, 1200, 1600 RPM)	
22.	64160	Carrier—Gear (400, 540 RPM)	

Fig. No.	Part No.	Description	
	64159	Carrier—Gear (700, 900 RPM)	
	22702	Carrier—Gear (1200, 1600 RPM)	
23.	19314	Ass'y—Gear & Bearing (2)* (400, 540, 700, 900 RPM)	
	19331B	Ass'y—Gear & Bearing (2)* (1200, 1600 RPM)	
24.	19267	Gear—Pinion (1200, 1600 RPM)	
25.	64162	Carrier—Gear (400, 540, 700, 900 RPM)	Screwdriver & Nutrunner
	64161	Carrier—Gear (1200, 1600 RPM)	
	22704	Carrier—Gear (1/2"-20th) (400, 540, 700, 900 RPM)	Drill
	64163	Carrier—Gear (3/8"-24th) (400, 540, 700, 900 RPM)	
	64164	Carrier—Gear (3/8"-24th) (1200, 1600 RPM)	Stall Drive & Clinch Nut
	64157	Carrier—Gear (400, 540, 700, 900 RPM)	
	64158	Carrier—Gear (1200, 1600 RPM)	Stall Bar
	64153	Carrier—Gear (540, 900 RPM)	
	64154	Carrier—Gear (1600 RPM)	
26.	10228	Bearing—Ball	
27.	34952	Shield—Chuck (1/4" Cap.)	Requires Gear Case with Threads
	34951	Shield—Chuck (3/8" Cap.)	
28.	10515	Bushing (2)*(1200, 1600 RPM)	
	10040	Bearing—Needle (2)* (400, 540, 700, 900 RPM)	
	2355	Ass'y—Dead Handle	

COMPLETE ASSEMBLY

63459	Ass'y—Gear Case Complete (400, 540 RPM)	Screwdriver & Nutrunner (Includes Figs. 10-15)
63460	Ass'y—Gear Case Complete (700, 900 RPM)	
63461	Ass'y—Gear Case Complete (1200, 1600 RPM)	
63464	Ass'y—Gear Case Complete (1/2"-20 Thd)(400, 540 RPM)	Drills (Includes Figs. 10-15)
63465	Ass'y—Gear Case Complete (1/2"-20 Thd)(700, 900 RPM)	
63466	Ass'y—Gear Case Complete (3/8"-24 Thd)(1200, 1600 RPM)	
63470	Ass'y—Gear Case Complete (400, 540 RPM)	Stall Drive (Includes Figs. 1-6, 10- 15)
63471	Ass'y—Gear Case Complete (700, 900 RPM)	
63472	Ass'y—Gear Case Complete (1200, 1600 RPM)	
63476	Ass'y—Gear Case Complete (400 RPM)	Clinch Nut (Includes Figs. 10-15)
63477	Ass'y—Gear Case Complete (700 RPM)	
63478	Ass'y—Gear Case Complete (1200 RPM)	

*Order Quantity As Required

FURNISH CATALOG, SERIAL, AND MODEL NUMBER WHEN
ORDERING PARTS

PARTS LIST FOR NO. 2 1/2 SERIES MOTORS

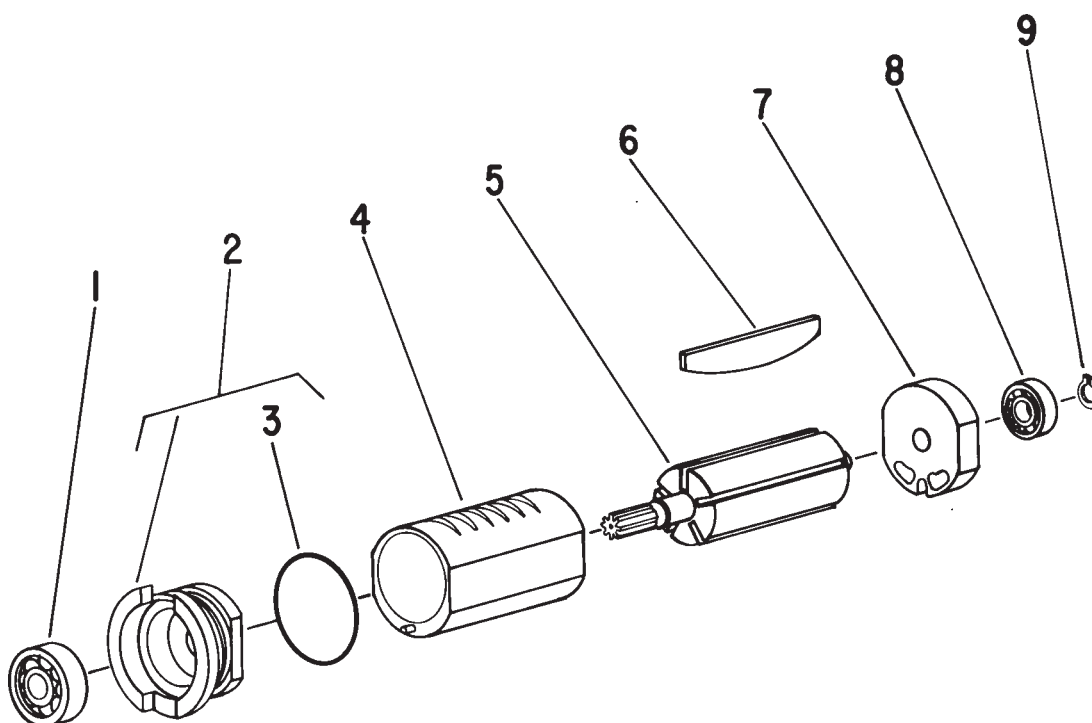


Fig. No.	Part No.	Description
1.	10220	Bearing—Ball
2.	13550	End Plate—Front
3.	14342	Ring—"O"
4.	64108	Cylinder (Reversing)
	64057	Cylinder (Non-Reversing)
5.	54860	Rotor (6-Tooth)(700, 900, 1200, 1600, 2000, 2600, 4400, 5800 RPM)
	54861	Rotor (8-Tooth)(400, 540, 2500, 3350 RPM)
6.	63192	Ass'y—Rotor Vane (Set of 5)
7.	10552	End Plate—Rear
8.	10230	Bearing—Ball
9.	21491	Ring—Retaining

COMPLETE ASSEMBLIES

63375	Ass'y—Motor (6-Tooth)(Reversing)(700, 1200, 2000, 4400 RPM)
63376	Ass'y—Motor (8-Tooth)(Reversing)(400, 2500 RPM)
63373	Ass'y—Motor (6-Tooth)(Non-Reversing)(900, 1600, 2600, 5800 RPM)
63374	Ass'y—Motor (8-Tooth)(Non-Reversing)(540, 3350 RPM)

*Order Quantity As Required

**FURNISH CATALOG, SERIAL, AND MODEL NUMBER WHEN
ORDERING PARTS**

PARTS LIST FOR NO. 2 1/2 SERIES DIRECT, POSITIVE "A" CLUTCHES

*Order Quantity As Required

FURNISH CATALOG,
SERIAL, AND MODEL
NUMBER WHEN
ORDERING PARTS

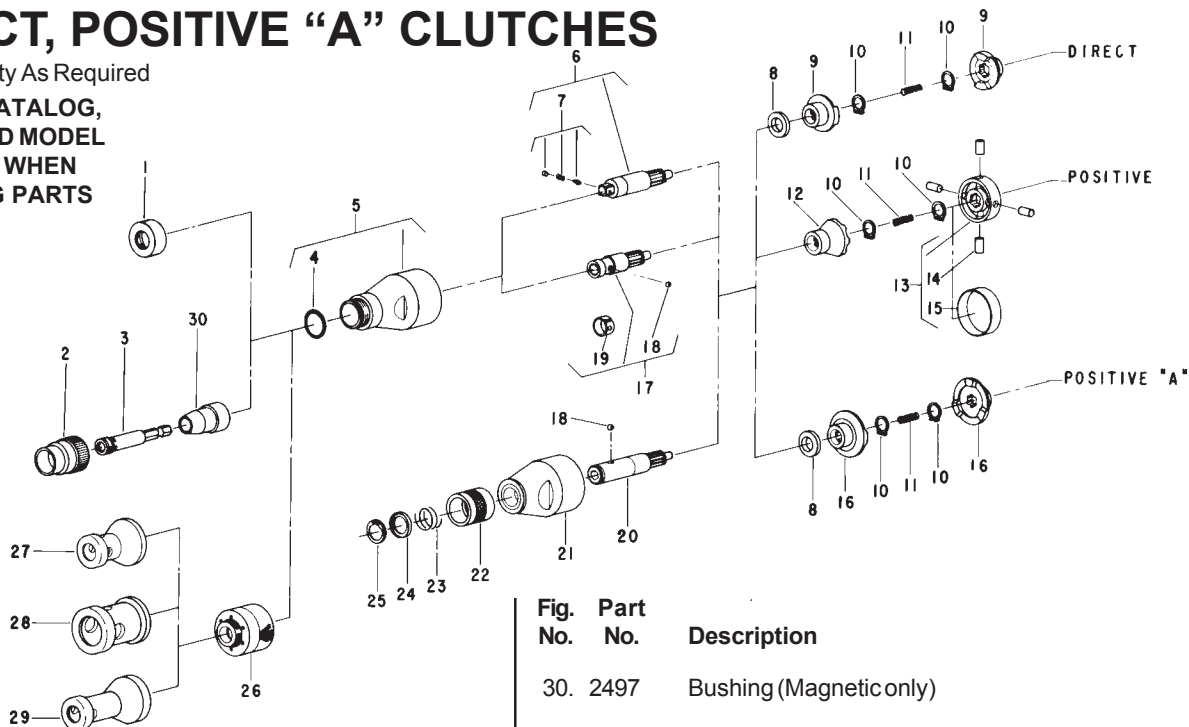


Fig. No.	Part No.	Description
1.	54076	Protector—Thread
2.	44520	Retainer—Finder (Screwdriver)
3.	2525	Bit Holder—Magnet (Magnetic only)
4.	14281	Ring—"O"
5.	53100	Case—Clutch
6.	63449	Ass'y—Drive Spindle (1/4" Square)(Nutrunner)
	63450	Ass'y—Drive Spindle (3/8" Square)(Nutrunner)
7.	33827	Ass'y—Socket Retainer (1/4" Square)(Nutrunner)
	33465	Ass'y—Socket Retainer (3/8" Square)(Nutrunner)
8.	44663	Spacer (Direct and Positive "A")
9.	64039	Clutch—Direct (2)*
10.	21500	Ring—Retainer (2)*
11.	21379	Spring
12.	64040	Clutch—Positive
13.	33630	Ass'y—Roller Cage
14.	34856	Roller (4)*
15.	34854	Ring—Roller Retainer
16.	44662	Clutch—Positive "A" (2)*
	68068	Clutch—Positive "AS" 25° (Set of 2)
17.	63447	Ass'y—Drive Spindle (Screwdriver)
18.	10902	Ball—Retainer (Screwdriver and Quick Change)
19.	25854	Ring—Ball Retainer (Screwdriver)
20.	63448	Ass'y—Drive Spindle (Quick Change) (Includes Figs. 18, 22-25)
21.	54469	Case—Clutch (Quick Change)
22.	54468	Retainer—Ball (Quick Change)
23.	21406	Spring (Quick Change)
24.	44660	Ring—Guide (Quick Change)
25.	21501	Ring—Retaining (Quick Change)
26.	53511	Ass'y—Depth Locator Base
27.	54103	Nose Piece—Round Locator
	14109	Cap—End
28.	54104	Nose Piece—Fastener Locator
	14110	Cap
29.	54241	Nose Piece—Long Round Locator
	14109	Cap—End

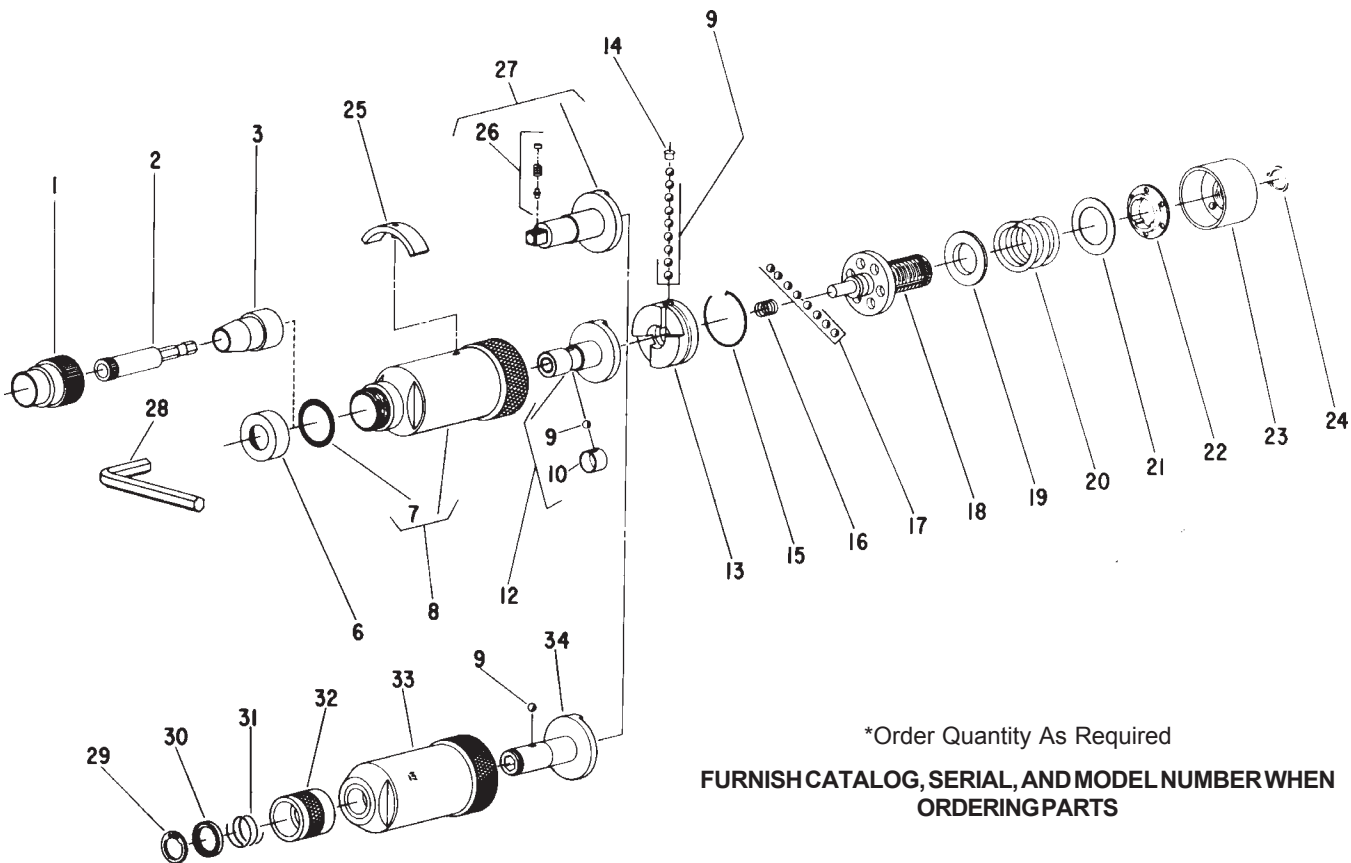
Fig. Part
No. No. Description

30. 2497 Bushing (Magnetic only)

COMPLETE ASSEMBLY

63481	Ass'y—Complete Clutch (Screwdriver) (Figs. 1-5, 17, 8-11)	Direct Clutch
63482	Ass'y—Complete Clutch (Quick Change) (Figs. 8-11, 18, 20-25)	
63483	Ass'y—Complete Clutch (Nutrunner 1/4" Square) (Figs. 1, 4-11)	
63484	Ass'y—Complete Clutch (Nutrunner 3/8" Square) (Figs. 1, 4-11)	
63485	Ass'y—Complete Clutch (Screwdriver) (Figs. 1-5, 10-15, 17)	Positive Clutch
63486	Ass'y—Complete Clutch (Quick Change) (Figs. 10-15, 18, 20-25)	
63487	Ass'y—Complete Clutch (Nutrunner 1/4" Square) (Figs. 1, 4-7, 10-15)	
63488	Ass'y—Complete Clutch (Nutrunner 3/8" Square) (Figs. 1, 4-7, 10-15)	
63489	Ass'y—Complete Clutch (Screwdriver) (Figs. 1-5, 8, 10, 11, 16, 17)	Positive "A" Clutch
63490	Ass'y—Complete Clutch (Quick Change) (Figs. 8, 10, 11, 16, 18, 20-25)	
63491	Ass'y—Complete Clutch (Nutrunner 1/4" Square) (Figs. 1, 4-8, 10, 11, 16)	
63492	Ass'y—Complete Clutch (Nutrunner 3/8" Square) (Figs. 1, 4-8, 10, 11, 16)	
68289	Ass'y—Complete Clutch (Quick Change) (Figs. 8, 10, 11, 16, 18, 20-25)	Positive "AS" Clutch
68290	Ass'y—Complete Clutch (Figs. 1-5, 8, 10, 11, 16, 17)	

PARTS LIST FOR NO. 2 1/2 SERIES ADJUSTABLE CLUTCH



*Order Quantity As Required

**FURNISH CATALOG, SERIAL, AND MODEL NUMBER WHEN
ORDERING PARTS**

Fig. No.	Part No.	Description
1.	44520	Retainer—Finder
2.	2525	Bit Holder—Magnetic (Magnetic Only)
3.	2497	Bushing (Magnetic Only)
6.	54076	Protector—Thread
7.	14281	Ring—"O"
8.	53074	Ass'y—Clutch Case
9.	10902	Ball—Steel (10)*
10.	25854	Clip—Retainer
12.	53076	Ass'y—Bit Holder
13.	54071	Jaw—Clutch
14.	54074	Retainer—Ball
15.	21827	Ring—Retaining
16.	41250	Spring
17.	10291	Ball—Steel (8)*
18.	22669	Spindle—Clutch
19.	54072	Guide—Spring
20.	41249	Spring—Compression (For torque setting above 25 inch pounds)
	41284	Spring—Compression (Green)(For torque setting below 25 inch pounds)
21.	35273	Washer
22.	54073	Washer—Index
23.	53095	Nut—Adjusting
24.	21774	Ring—Retaining
25.	53099	Wrench—Adjusting

Fig. No.	Part No.	Description
26.	33827	Ass'y—Socket Retainer (1/4" Square Nutrunner)
	33465	Ass'y—Socket Retainer (3/8" Square Nutrunner)
27.	53082	Spindle—Drive (1/4" Square Nutrunner)
	53083	Spindle—Drive (3/8" Square Nutrunner)
28.	30208	Wrench—Allen
29.	21501	Ring—Retaining
30.	44660	Ring—Guide
31.	21406	Spring
32.	54468	Retainer—Ball
33.	54470	Case—Clutch
34.	22677	Holder—Bit

COMPLETE ASSEMBLY

53090	Ass'y—Adjustable Clutch Complete (1/4" Hex Screwdriver)
53089	Ass'y—Adjustable Clutch Complete (3/8" Square Nutrunner)
53088	Ass'y—Adjustable Clutch Complete (1/4" Square Nutrunner)
53586	Ass'y—Clutch Case & Bit Holder (Includes Figs. 9, 29-34)(Quick Change Screwdriver)
53085	Ass'y—Adjustable Clutch w/o Bit Holder (Includes Figs. 9, 13-24)

PARTS LIST FOR NO. 2 1/2 SERIES ALL ANGLE HEAD

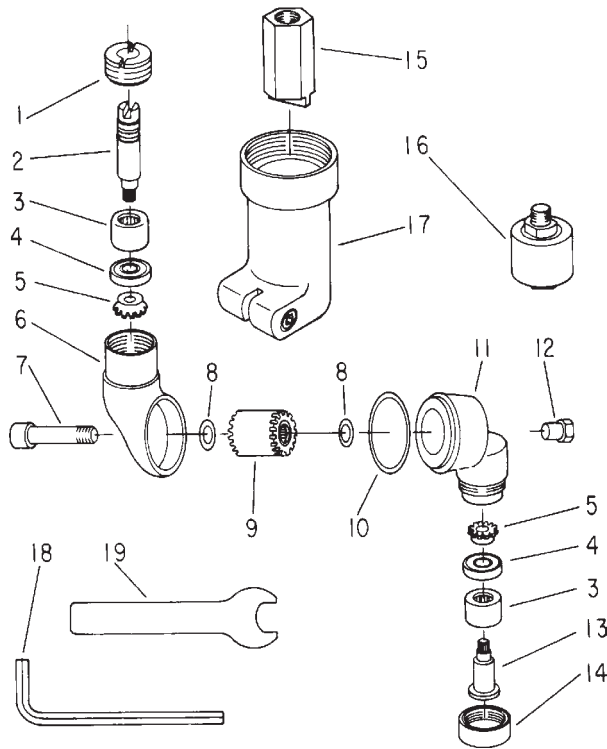


Fig. No.	Part No.	Description
1.	13308	Nut—Rear Bearing Retainer
2.	54641	Drive—Spindle
3.	10068	Bearing—Needle
4.	10285	Bearing—Ball
5.	19473	Gear—Pinion
6.	12403	Housing—Drive Spindle
7.	40004	Stud—Swivel
8.	35449	Washer—Shim (.010")
9.	19330	Ass'y—Gear & Bearings
10.	40006	Washer—Copper Shim
11.	12404	Housing—Drill Spindle
12.	40005	Nut—Swivel Stud
13.	54642	Spindle—Drill
14.	54643	Retainer—Front Bearing
15.	54616	Coupler
16.	21130	Chuck—Complete
17.	12401	Sleeve
18.	30206	Wrench—Allen (3/16")
19.	40007	Wrench—Chuck Body
	53822	Ass'y—All Angle Head (Includes Figs. 1 thru 14, and 16, 19)

*Order Quantity As Required

**FURNISH CATALOG, SERIAL, AND MODEL NUMBER WHEN
ORDERING PARTS**

PARTS LIST FOR CLINCH NUT TOOLS

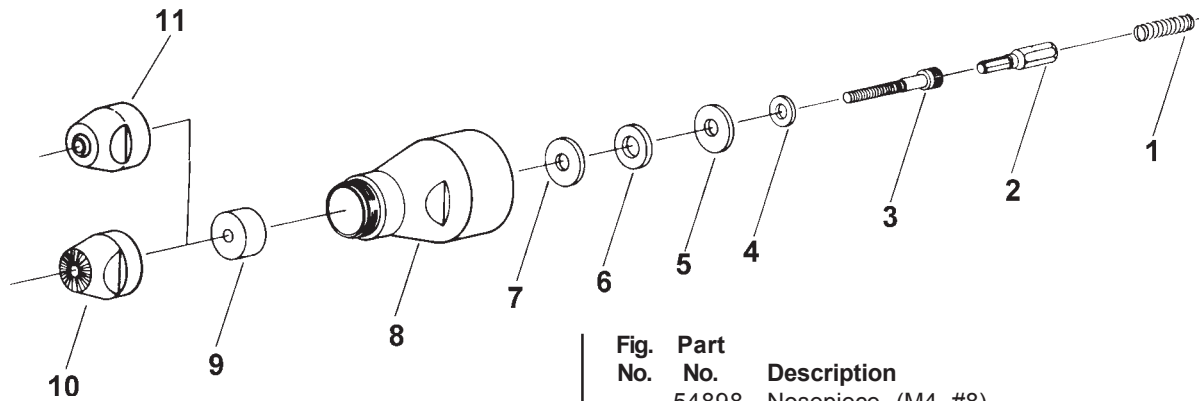


Fig. No.	Part No.	Description
1.	21411	Spring
2.	54907	Bit—Insert (#4)
	54908	Bit—Insert (M3)
	36820	Bit—Insert (#6)
	36821	Bit—Insert (M4)
	2952	Bit—Insert (#8)
	2536	Bit—Insert (#10)
	36822	Bit—Insert (M5)
	36823	Bit—Insert (M6)
	2567	Bit—Insert (1/4")
	54827	Bit—Insert (5/16")
	54910	Bit—Insert (M8)
	54909	Bit—Insert (3/8")
3.	06086	Screw—Soc. Hd. Cap (#4-40 x 1")
	56101	Screw—Soc. Hd. Cap (M3 x 0.5 x 25mm)
	06211	Screw—Soc. Hd. Cap (#6-32 x 1-1/2")
	56203	Screw—Soc. Hd. Cap (M4 x 0.7 x 40mm)
	06603	Screw—Soc. Hd. Cap (#8-32 x 1-1/2")
	07085	Screw—Soc. Hd. Cap (#10-32 x 1-1/2")
	57001	Screw—Soc. Hd. Cap (M5 x 0.8 x 40mm)
	57551	Screw—Soc. Hd. Cap (M6 x 1.0 x 50mm)
	08302	Screw—Soc. Hd. Cap (1/4"-20 x 2")
	08796	Screw—Soc. Hd. Cap (5/16"-18 x 2-3/8")
	58551	Screw—Soc. Hd. Cap (M8 x 1.25 x 60mm)
	09085	Screw—Soc. Hd. Cap (3/8"-16 x 2-3/8")
4.	54903	Washer (#4, M3)
	54904	Washer (#6)
	25196	Washer (M4, #8)
	35234	Washer (#10, M5)
	41340	Washer (1/4")(Crown Side Toward Screw Head)
	54825	Washer (5/16", M8)
5.	10077	Washer—Thrust (#4, M3, #6, M4, #8, M6, 1/4")
	67155	Washer—Thrust (#10, M5)(Smaller ID than Fig. 7)
	10079	Washer—Thrust (5/16", M8, 3/8")
6.	10072	Bearing—Thrust (#4, M3, #6, M4, #8, #10, M5, M6, 1/4")
	10078	Bearing—Thrust (5/16", M8, 3/8")
7.	10077	Washer—Thrust (#4, M3, #6, M4, #8, #10, M5, M6, 1/4")
	10079	Washer—Thrust (5/16", M8, 3/8")
8.	54108	Case—Clutch (#4, M3, #6, M4, #8, #10, M5, M6, 1/4")
	54826	Case—Clutch (5/16", M8, 3/8")
9.	54905	Spacer (#6, M4, #8)
	54906	Spacer (5/16", M8, 3/8")
10.	54896	Nosepiece (#4, M3)
	54897	Nosepiece (#6)

Fig. No.	Part No.	Description
	54898	Nosepiece (M4, #8)
	54899	Nosepiece (#10, M5)
	54900	Nosepiece (M6, 1/4")
	54901	Nosepiece (5/16", M8)
	54902	Nosepiece (3/8")
11.	64211	Nosepiece (#10) "T" Series
	64180	Nosepiece (1/4") "T" Series
	64181	Nosepiece (5/16") "T" Series
	64182	Nosepiece (3/8") "T" Series

COMPLETE ASSEMBLY

63287	Ass'y—Installer Head (#4)
63286	Ass'y—Installer Head (M3)
63288	Ass'y—Installer Head (#6)
63289	Ass'y—Installer Head (M4)
63137	Ass'y—Installer Head (#8)
63138	Ass'y—Installer Head (#10)
63290	Ass'y—Installer Head (M5)
63291	Ass'y—Installer Head (M6)
63139	Ass'y—Installer Head (1/4")
63140	Ass'y—Installer Head (5/16")
63292	Ass'y—Installer Head (M8)
63293	Ass'y—Installer Head (3/8")
63594	Ass'y—Installer Head (#10) "T" Series
63586	Ass'y—Installer Head (1/4") "T" Series
63587	Ass'y—Installer Head (5/16") "T" Series
63588	Ass'y—Installer Head (3/8") "T" Series

CONVERSIONS KITS

63295	Conversion Kit #4 (Includes Figs. 2-7, 10)
63294	Conversion Kit M3 (Includes Figs. 2-7, 10)
63296	Conversion Kit #6 (Includes Figs. 2-7, 9, 10)
63298	Conversion Kit M4 (Includes Figs. 2-7, 9, 10)
63297	Conversion Kit #8 (Includes Figs. 2-7, 9, 10)
63299	Conversion Kit #10 (Includes Figs. 2-7, 9, 10)
63300	Conversion Kit M5 (Includes Figs. 2-7, 9, 10)
63302	Conversion Kit M6 (Includes Figs. 2, 3, 5-7, 10)
63301	Conversion Kit 1/4" (Includes Figs. 2-7, 10)
63303	Conversion Kit 5/16" (Includes Figs. 2-7, 9, 10)
63304	Conversion Kit M8 (Includes Figs. 2-7, 9, 10)
63305	Conversion Kit 3/8" (Includes Figs. 2, 3, 5-7, 9, 10)

NOTE: Also check figure 8 to see if your conversion requires a different clutch case.

*Order Quantity As Required

FURNISH CATALOG, SERIAL, AND MODEL NUMBER WHEN ORDERING PARTS

PARTS LIST FOR NO. 2 1/2 SERIES STALL BAR ATTACHMENT

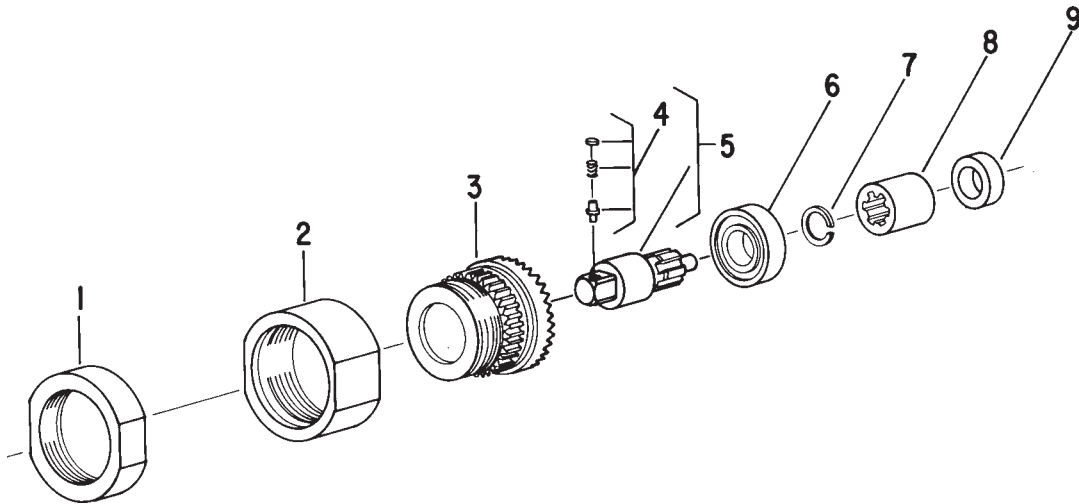


Fig. No.	Part No.	Description
1.	64079	Retainer—Stall Bar
2.	64076	Sleeve—Lock
3.	64075	Case—Stall Bar
4.	33465	Ass'y—Socket Retainer (3/8" Square Drive)
	43890	Ass'y—Socket Retainer (1/2" Square Drive)
5.	64078	Spindle—Tool (1/2" Square Drive)
	64077	Spindle—Tool (3/8" Square Drive)
6.	10228	Bearing—Ball
7.	21781	Ring—Retainer
8.	64074	Connector
9.	64085	Spacer

*Order Quantity As Required

**FURNISH CATALOG, SERIAL, AND MODEL NUMBER WHEN
ORDERING PARTS**



**SIoux
TOOLS INC.**

250 SNAP-ON DRIVE ■ PO BOX 1596 ■ MURPHY, NORTH CAROLINA 28906 ■ USA ■

Printed In U.S.A.